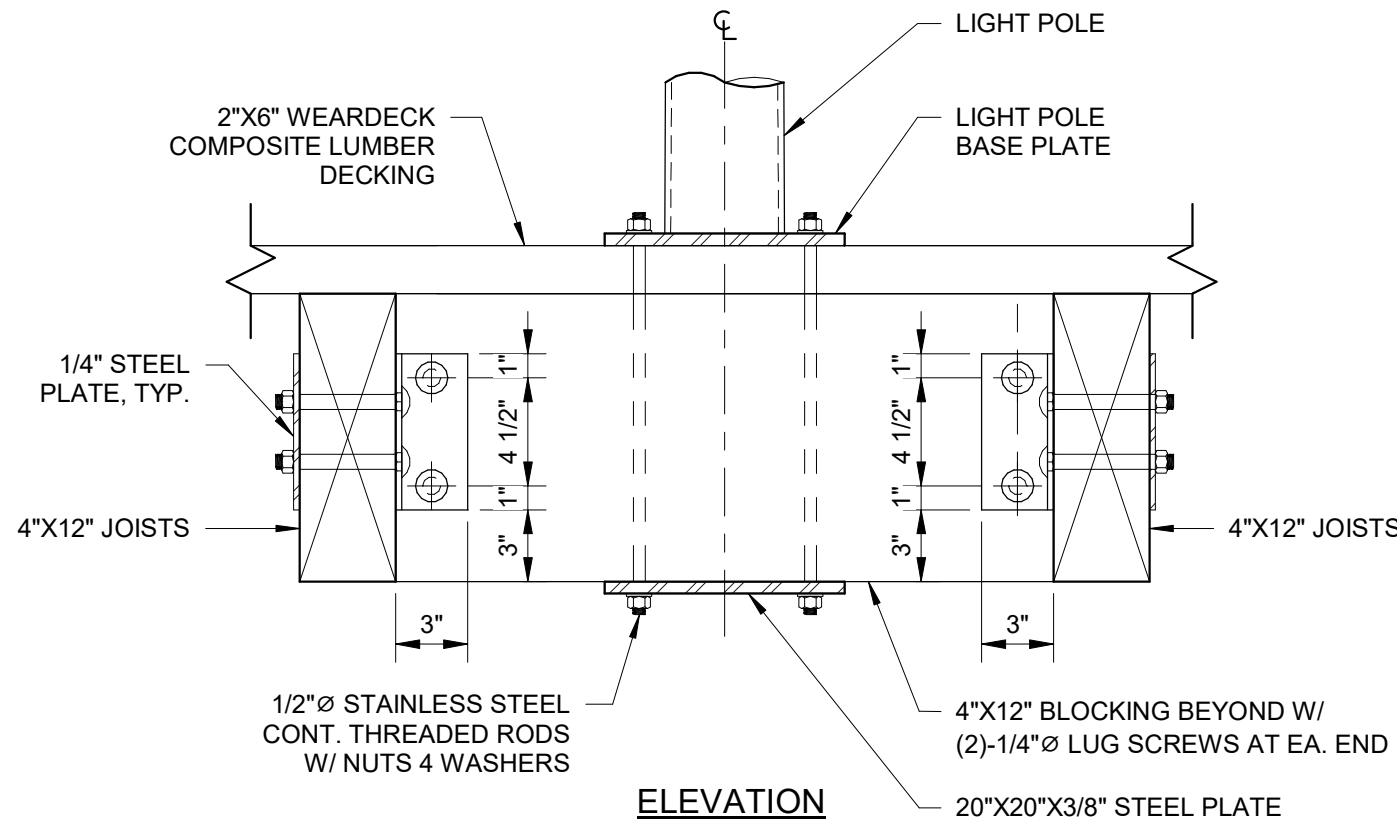
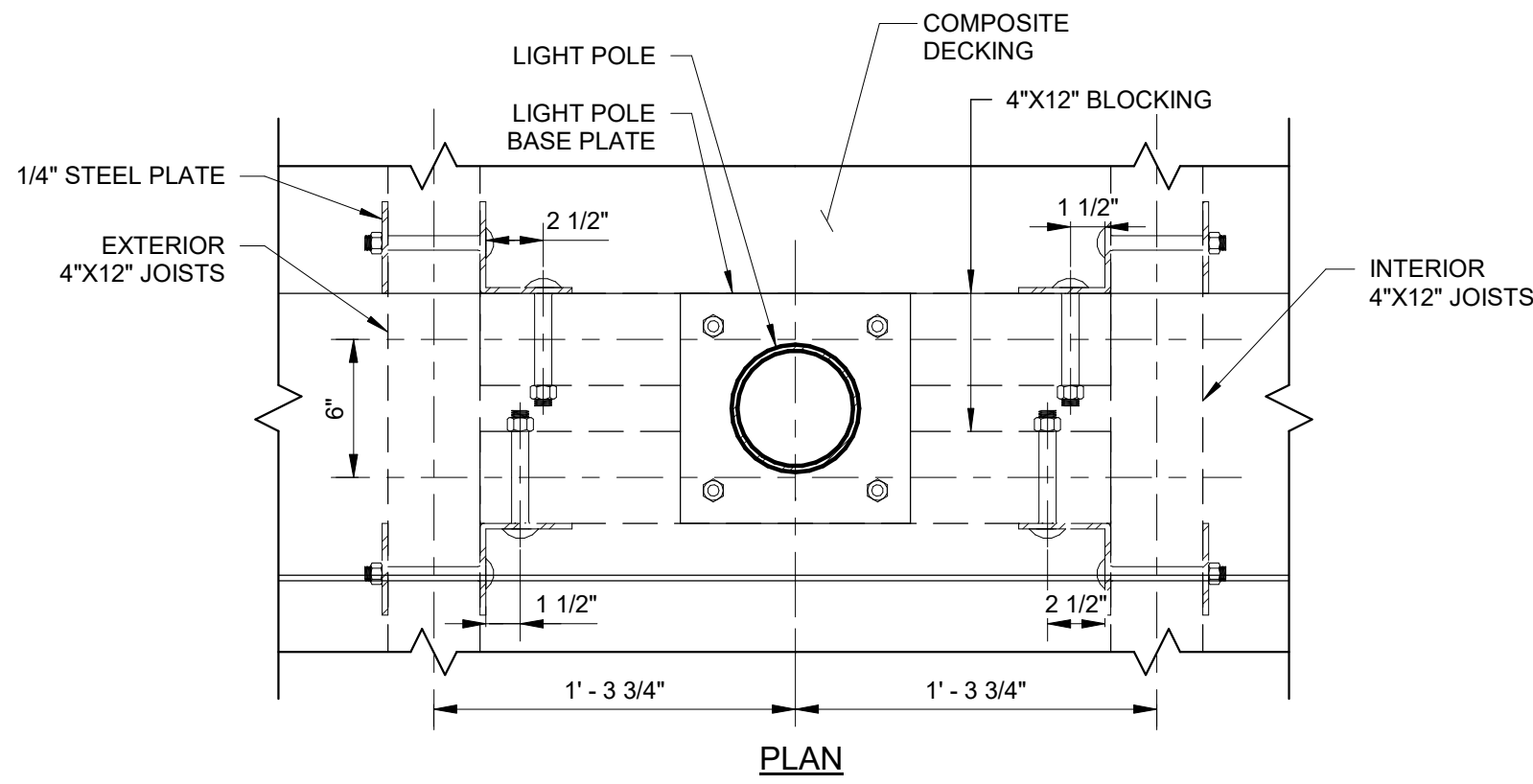
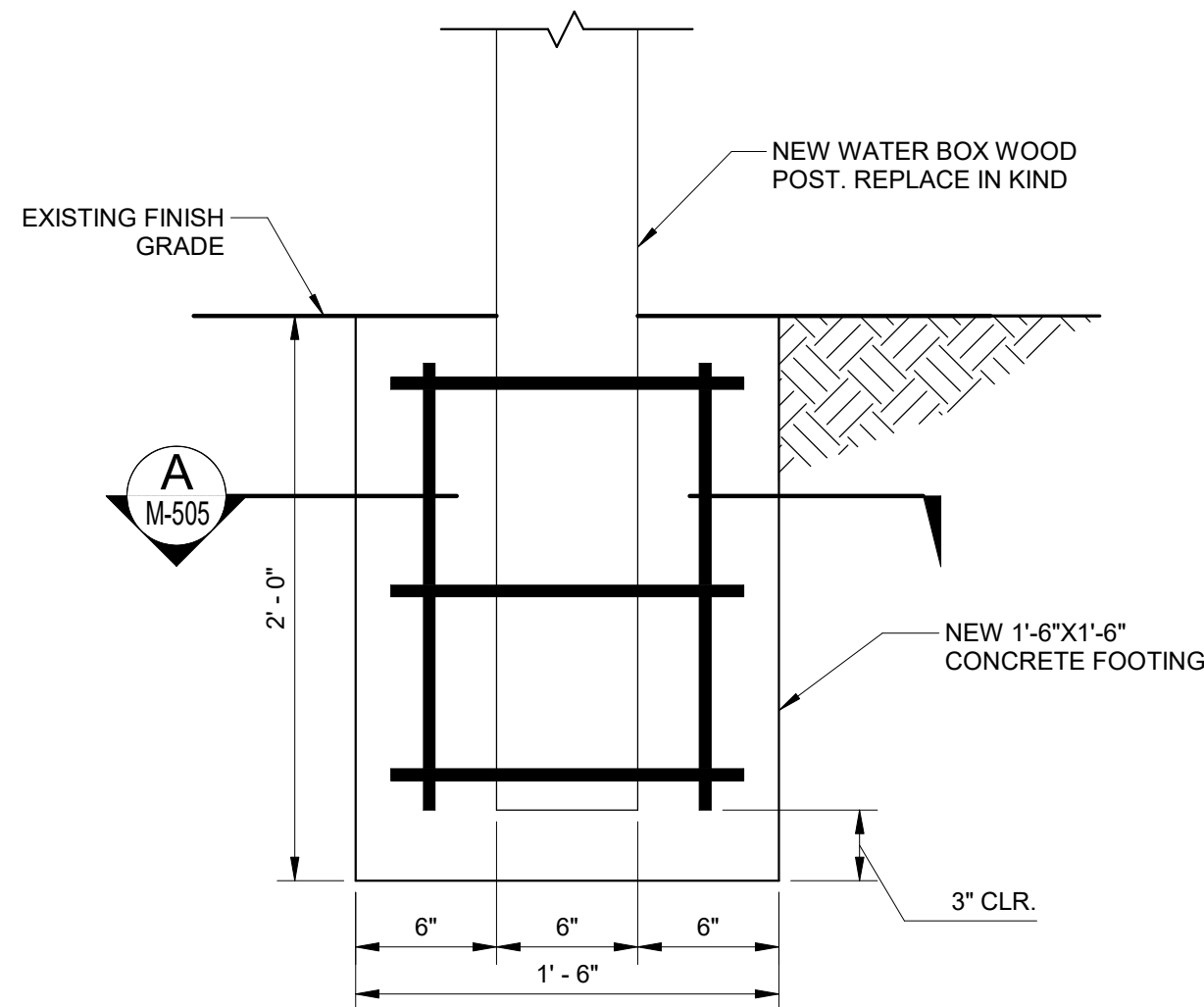


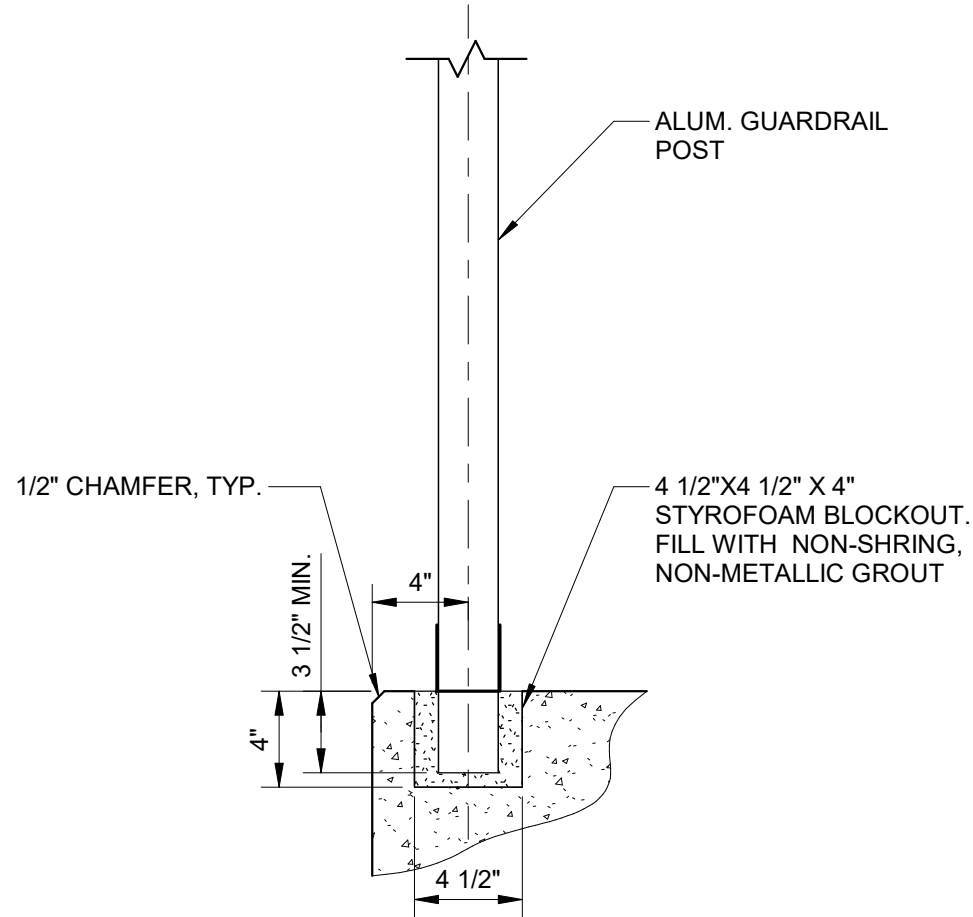
04/08/26



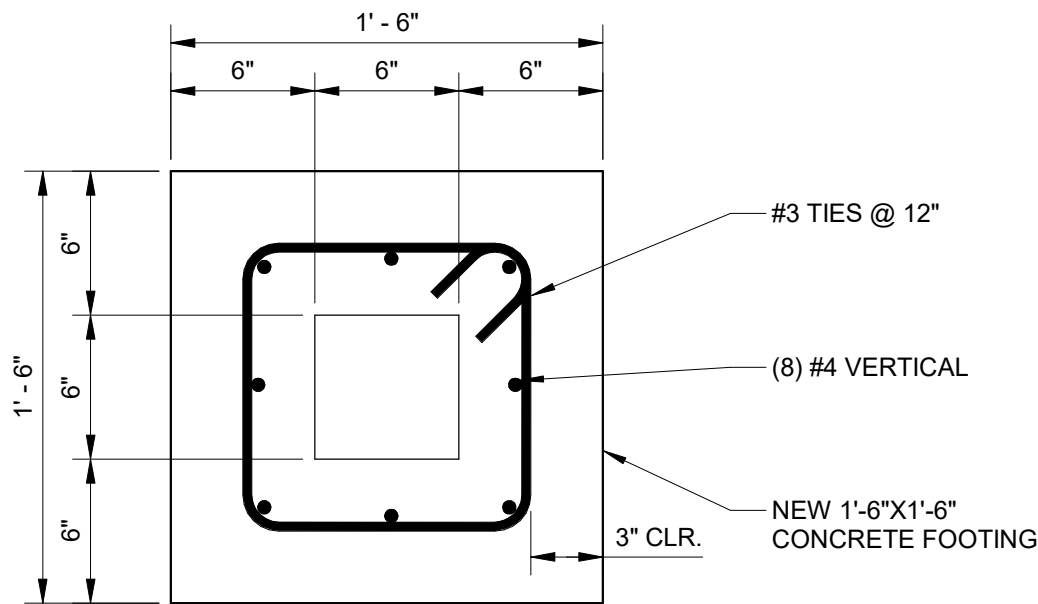
1 LIGHT POLE - DETAIL  
1 1/2" = 1'-0"



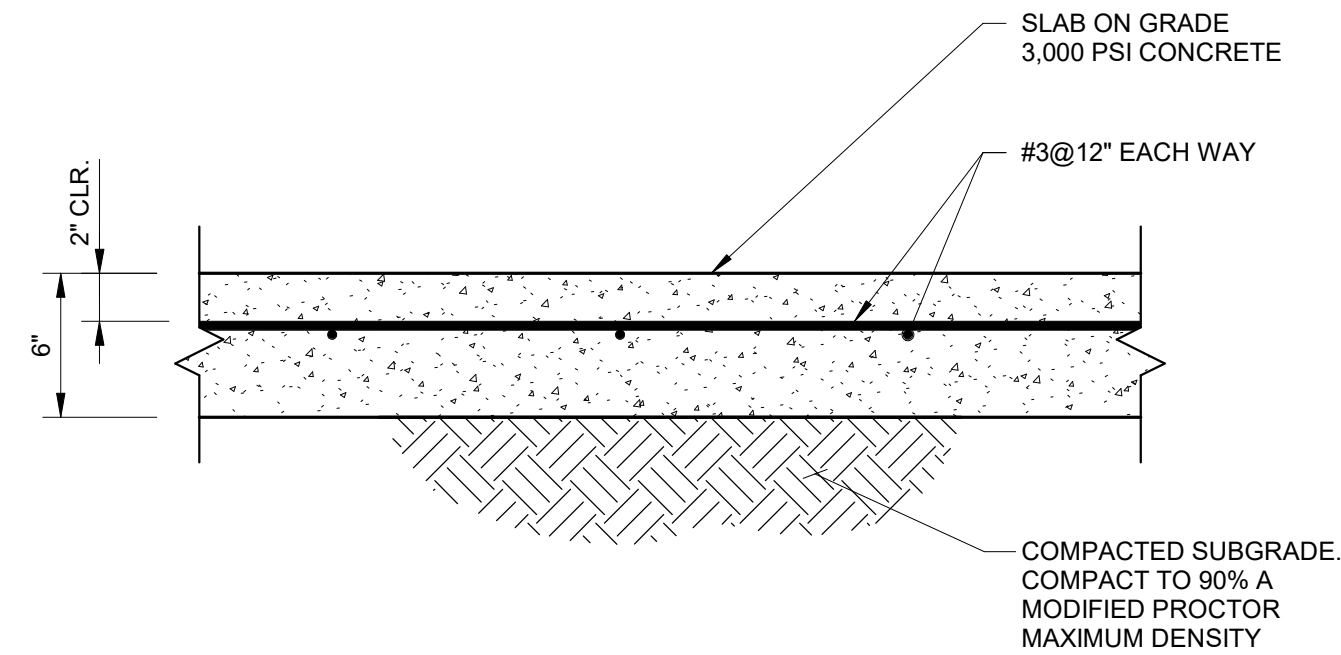
4 WATER BOX FOOTING - DETAIL  
1 1/2" = 1'-0"



2 GUARDRAIL POST INSTALLATION IN CONCRETE  
1 1/2" = 1'-0"

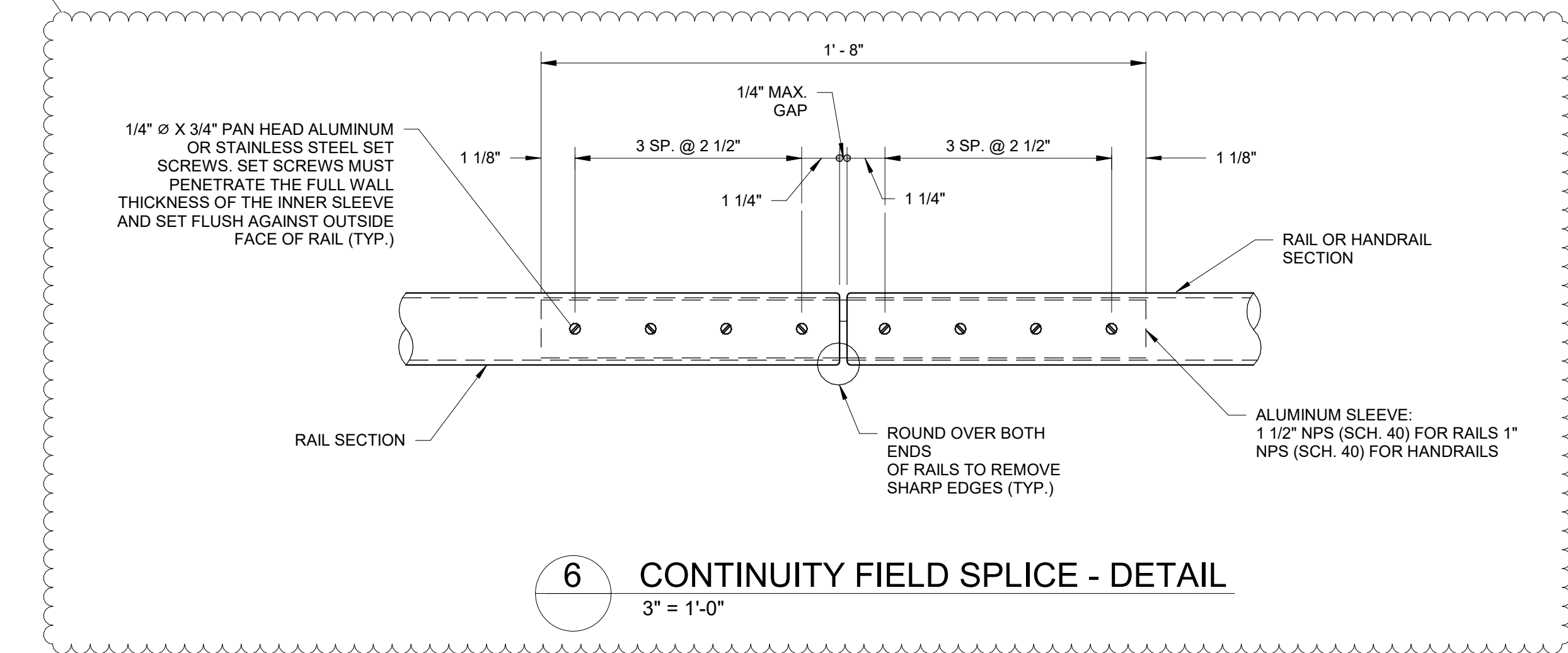


3 ALUMINUM GUARDRAIL TYP. ELEVATION  
1/2" = 1'-0"



5 SLAB ON GRADE TYPICAL - DETAIL  
1 1/2" = 1'-0"

A SECTION  
M-505  
1 1/2" = 1'-0"



6 CONTINUITY FIELD SPLICE - DETAIL  
3" = 1'-0"

NOTES:

- CONTRACTOR TO COORDINATE FINAL LOCATION OF 4"x12" BLOCKING WITH LIGHT POLE BASE PLATE.

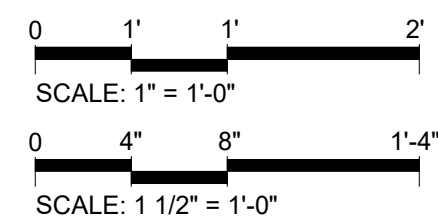
ANSI D (34"x22")


M

MOTT  
MACDONALD

930 Main Campus Drive,  
Suite 200  
Raleigh, NC 27606  
License No. F-0669  
T +1 (919) 552 2253  
F +1 (919) 552 2254  
www.mottmacamericas.com

GRAPHIC SCALE



	Designed By	JAVIER QUIROS	County	DARE COUNTY		
	Entered By	VICTOR PADILLA	Division	FERRY DIVISION		
	Project Engineer	KRISTOPHER PAGAN	Plan Date	1-14-26		
	Project Manager	ALLISON THORBURN				
	A	04/08/26	VP	BID CLARIFICATIONS	JQ	KP
	Rev.	Date	Drawn	Description	Ch'kd	App'd

NCDOT HATTERAS FERRY DOCK  
REPLACEMENT

M-505 MISCELLANEOUS DETAILS  
(5 OF 5)